

Repeater RF (EM4007)

In **Fixed Reading Management System** Repeater EM4007 can receive RF transmissions from meters and retransmit them to the concentrator GateWay. Repeater RF works on battery with 2 options of charging - from 220/110 VAC or from solar battery. Each 15 minutes the repeater broadcasts voltage of accumulator battery, status of work and internal temperature.

Parameters	Description
Description	Repeater RF EM4007
Box size	250x250x70 mm
Solar battery size	400x232x40 mm
Antenna lenth	600 mm
Unit Weight	3 kg
Power Supply	Lead accumulator battery 12 VDC 2,2 A*h - with charge from solar battery or power 220VAC
Operational Life without charge	14 days
RF Transmit Bitrate	10.0 kbps
Frequencies	RF - FSK 433/868/900 MHz
Configuration Storage	Non-volatile memory
Operating Temperatures	-40° C to +85° C
Environmental Humidity	IP-68 Max. 95%

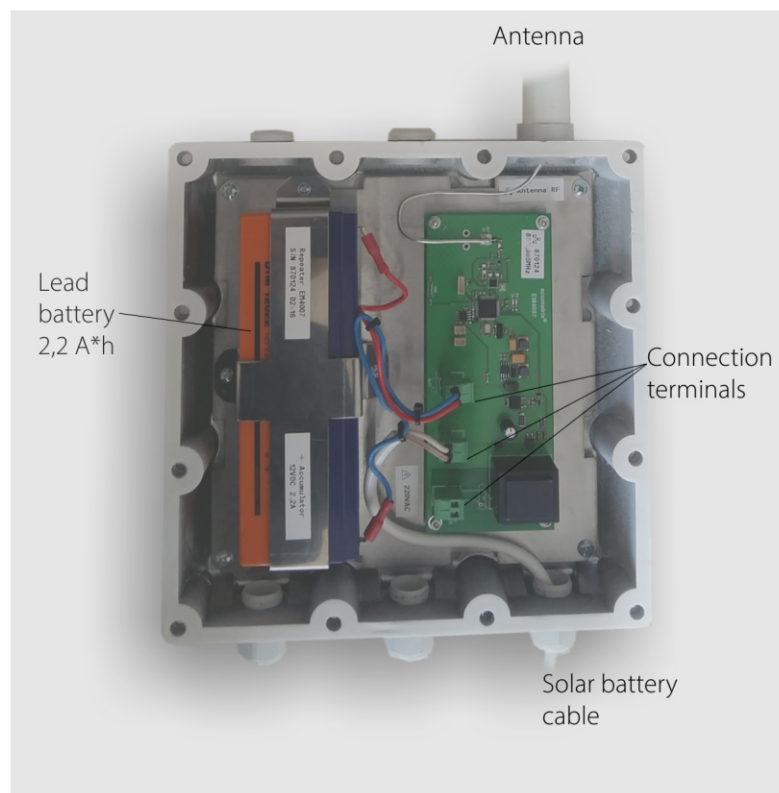
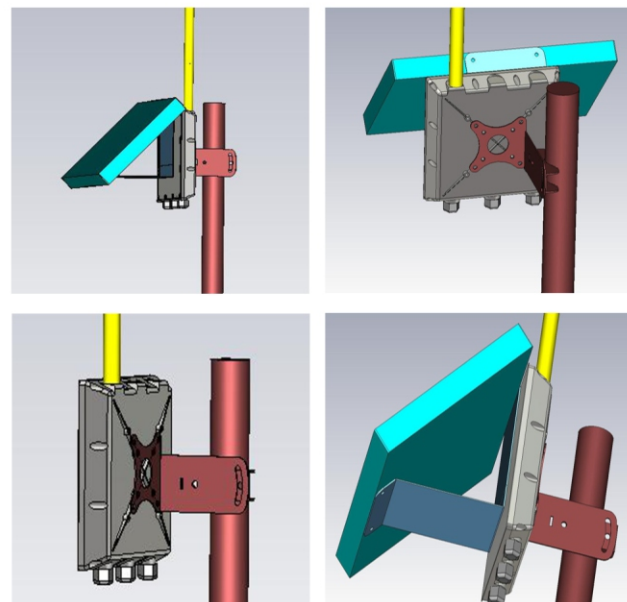


Table of consumption
(in the different modes)

Parameter	Consumption	Time duration
Sleep mode	0,02 mA	
RF-transmit	30 mA	0,045 sec

Installation on site



Signals of connection terminals

Battery	+	Lead battery connection	
	-		
Solar	+	Solar battery connection	
	-		
Power	L	Power supply 220 VAC connection	
	N		